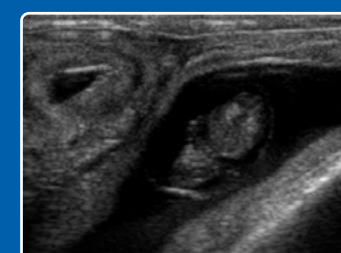
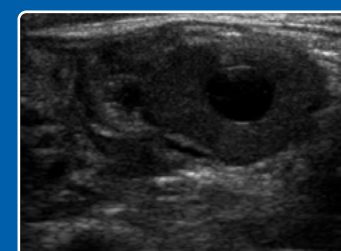
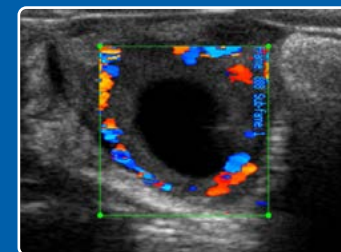
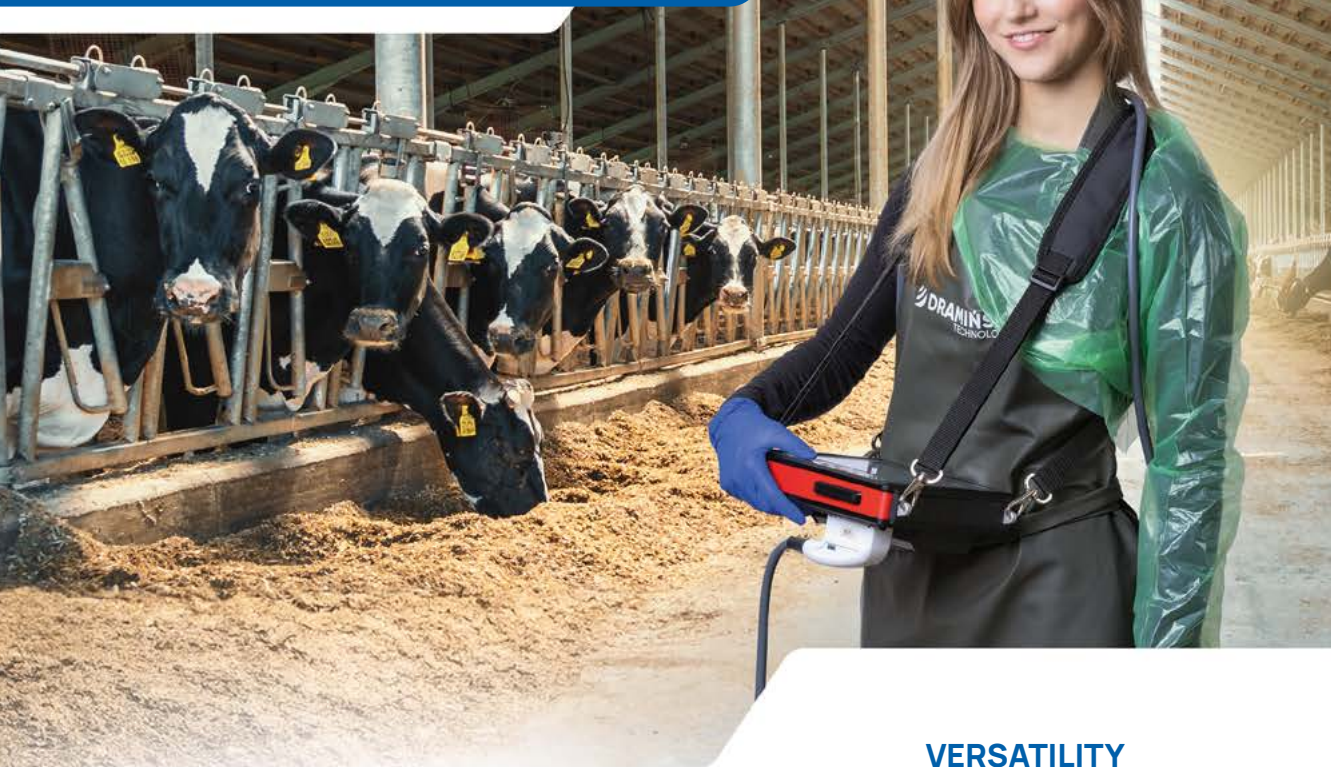


iScan 3

Advanced and versatile

iScan 3

PORTABLE ULTRASOUND SCANNER



COLOUR DOPPLER

Colour Doppler imaging mode allows for the diagnosis of corpus luteum activity 18-20 days post-insemination. This enables the identification of cows that have not been fertilized before the next estrus cycle occurs. Instant activation and optimized settings ensure work comfort and usability.

WIRELESS IMAGE TRANSFER

The built-in WiFi module enables the wireless transfer of ultrasound images to tablets, phones, and **iLens** wireless goggles. Animal owners or students can view the live image from a safe distance, increasing accessibility and convenience.

ENHANCED ERGONOMICS

The most important functions are accessible from the keyboard. Dedicated keyboard shortcuts speed up work, with the most recently used measurements set as default. You can also customize the descriptions to suit your preferences.

VERSATILITY

A continually expanding range of compatible probes provides flexibility in patient approach. **iScan 3** is used for:

- Reproductive system examinations
- Blood flow diagnostics of the corpus luteum
- Pregnancy diagnosis and monitoring
- Determining the viability and sex of the fetus
- Lung, digestive tract, udder and locomotor system examinations

A special guide also enables the performance of OPU procedures



iScan 3

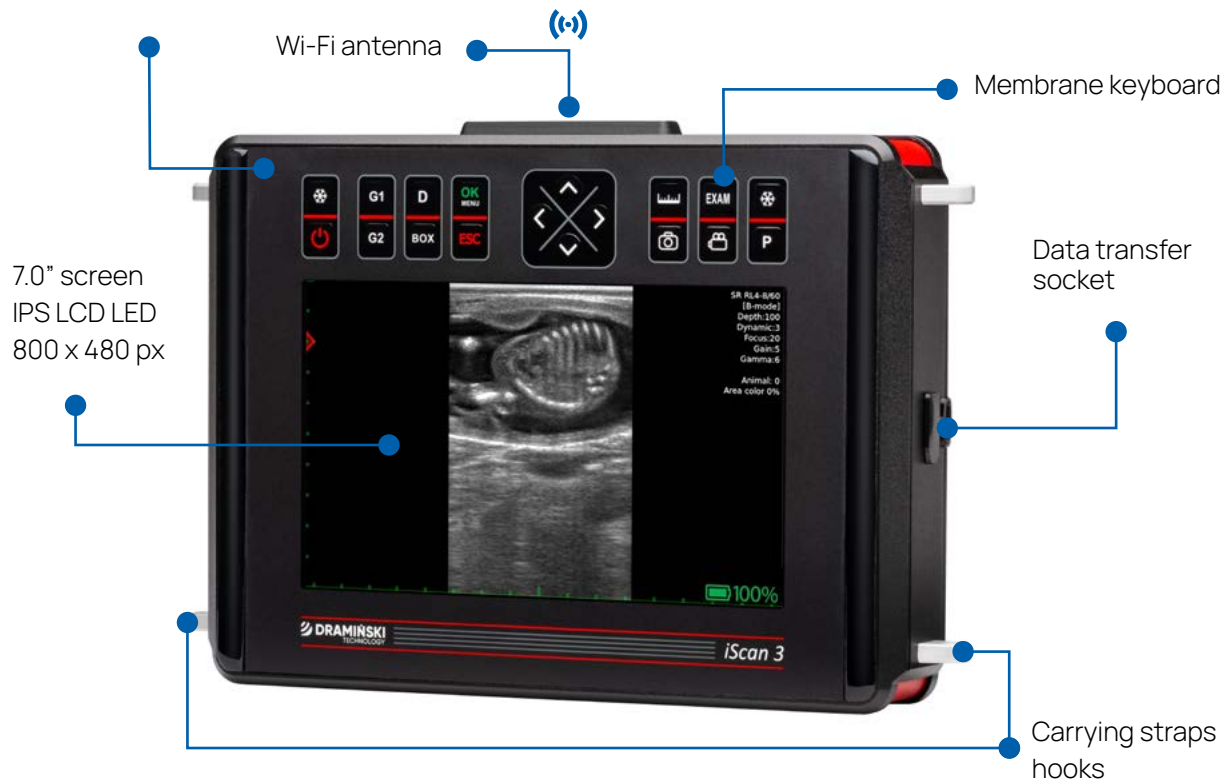
Your tool for advanced reproduction management.

DIAGNOSTIC IMAGES

Dimensions: 27 x 18 x 7 cm

Weight: 2.6 kg (5.73 lbs) with probe & battery

iScan 3



Probe socket
protection slide



Up to 4 hours of continuous work
on a full charge

Set contains:

- **iScan 3** ultrasound scanner
- Ultrasound probe of your choice*
- External battery
- Battery charger
- Carrying straps
- Transport case
- Manual (USB)

* Select the probe prior to purchase

Electronic, broadband, interchangeable:

- 156 Convex abdominal probe 5.0 MHz R50
- 181/A Microconvex abdominal probe 6.5 MHz R11
- 196 Linear abdominal probe 8.0 MHz L40
- 212 Convex rectal probe 5.0 MHz R60
- 223 Linear rectal probe 7.0 MHz L60





SEE MORE

DRAMIŃSKI S.A.

Wiktora Steffena 21, 11-036 Sząbruk, Poland

 +48 89 675 26 00  sales@draminski.com

Follow us:    

www.draminski.com