



Cow foetus heart



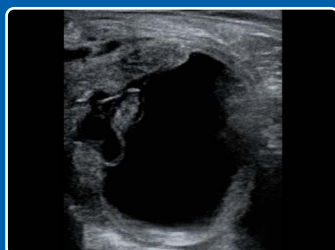
Cow foetus



Cow ovary



Cow uterus



Horse pregnancy

DIAGNOSTIC IMAGES



SEE MORE

DRAMIŃSKI S.A.

Wiktora Steffena 21, 11-036 Sząbruk, Poland

+48 89 675 26 00 @ sales@draminski.com

Follow us:

www.draminski.com

v.1987270426EN

DRAMIŃSKI
TECHNOLOGY

WIRELESS ULTRASOUND SCANNER



airScan
pro

Colour Doppler | Waterproof | Lightweight

www.draminski.com

Dramiński airScan pro

Be one step ahead of others

Lightweight, robust and wireless ultrasound scanner designed for bovine and equine veterinarians.

Enclosed in a **waterproof aluminum housing**, the state of the art technology provides **superior image quality** together with a sensitive **Doppler mode**.

Ergonomic keyboard together with wireless augmented reality **iLens goggles** significantly improves workflow. Exchangeable batteries ensure enough energy for all day of scanning.

Technical data

- **Probes (FIXED!):**
Rectal linear 4.2-12.5 MHz, range up to 19 cm
Rectal convex 3.0-7.0 MHz, range up to 30 cm
- **Battery operating time:**
Up to 2 hours on the standard battery
Up to 4 hours on the Power Battery
- **Battery charging time (5V 3A QC, PD):**
Up to 2 hours – standard battery
Up to 4 hours – Power Battery
- **Weight (with probe and battery):**
Approx. 0.62 kg (1.37 lbs) – standard battery
Approx. 0.72 kg (1.59 lbs) – Power Battery
- Waterproof with IP65 rating
- Compatible with Android/iOS system on phone or tablet

airScan
pro

Key features

- **Wireless connection** with your mobile device or **iLens goggles**
- Same app for our wireless abdominal probes
- **Colour and Power Doppler** mode allow to indicate non-pregnant cows 18 days after AI, by assessment of CL blood flow
- Small and handy to mount on the waist belt
- **Exchangeable batteries**
- Charging via a standard **USB-C** cable at home or in the car
- **Membrane keyboard** with a battery charge indicator

Application

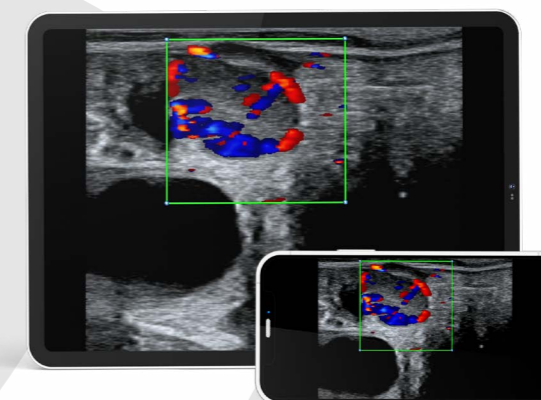
	airScan pro rectal LINEAR	airScan pro rectal CONVEX
Bovine reproduction	+	+
Equine reproduction	+	+
Small ruminant reproduction		+
Foetal sexing	+	+
CL blood flow	+	+
Lungs	+	+
Body condition	+	+
Udder and teat	+	
Liver		+
Gastrointestinal tract	+	+
Tendon	+	

Measurements

- Grid
- Distance
- Age of foetus



**Dramiński
airScan pro app**
Connect airScan pro
to your device.



Cow CL Doppler

Set contains

- **airScan pro** with integrated rectal linear or rectal convex probe
- Waist belt with a quick mount system
- 2 external batteries
- Battery charger
- Transport case
- User manual (USB flash drive)

